



VIDEOMINDER Technical Notes for Windows XP and 2000

1. Changing **VIDEOMINDER**'s operating/network settings
2. Adding a node statement
3. Sharing the server's hard drive
4. Adjusting the **VIDEOMINDER** shortcut properties
5. Installing and sharing cash drawers
6. Cash Drawer Firing String
7. Installing and sharing Parallel Printers
8. Printer settings in **VIDEOMINDER**
9. How to correct delays in the operation of cash drawers and printers

1. CHANGING VIDEOMINDER'S OPERATING/NETWORK SETTINGS

If you were currently running **VIDEOMINDER** under System Manager or as a single user under DOS or Windows 95/98, you will need to change the **VIDEOMINDER** setup so that it will work under a Windows 2000/XP network. Proceed as follows:

1. Go to a C:\CVM prompt
2. Type in **SETUPCD CVM**
3. Choose Option **A** - Change program parameters
4. Choose Option **C** - Change operating system
5. Choose Option **5** - MS-Dos 3.3 + Network
6. Choose Option **D** - Save changes
7. Say **Yes** to save changes
8. Choose **E** to Exit

You should also ensure that all the *.EXE files in the C:\CVM> directory are attributed as READ ONLY.

2. ADDING A NODE STATEMENT

All computers will need a node statement. This is done by editing the existing AUTOEXEC.NT file that resides in the directory C:\Windows\system32 of each computer.

The line that needs to be inserted is as follows:

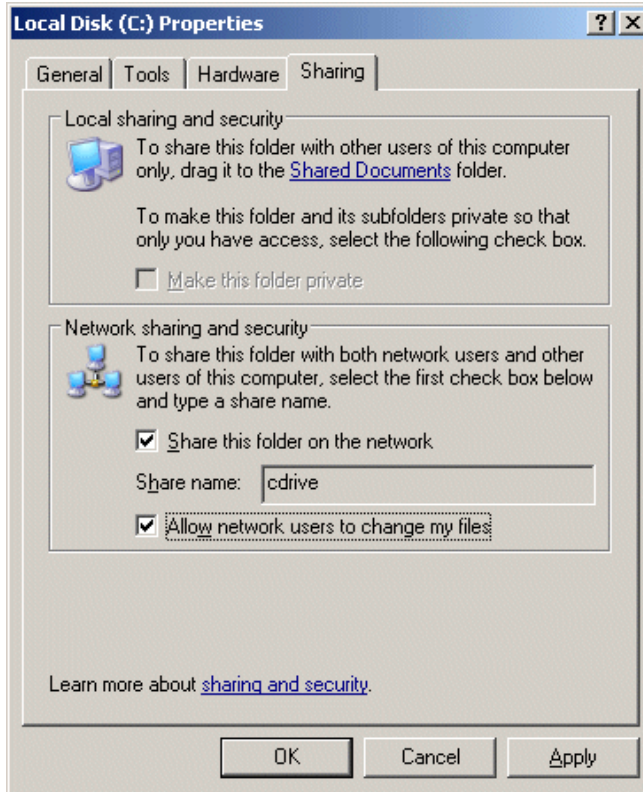
SET NODE=X (*X is a specific number*)

Each computer would have a different number. Eg,

SERVER Node=1
WORKSTATION Node=2

3. SHARING THE SERVER'S HARD DRIVE

The server's hard drive must be shared and given the following rights, as shown below.



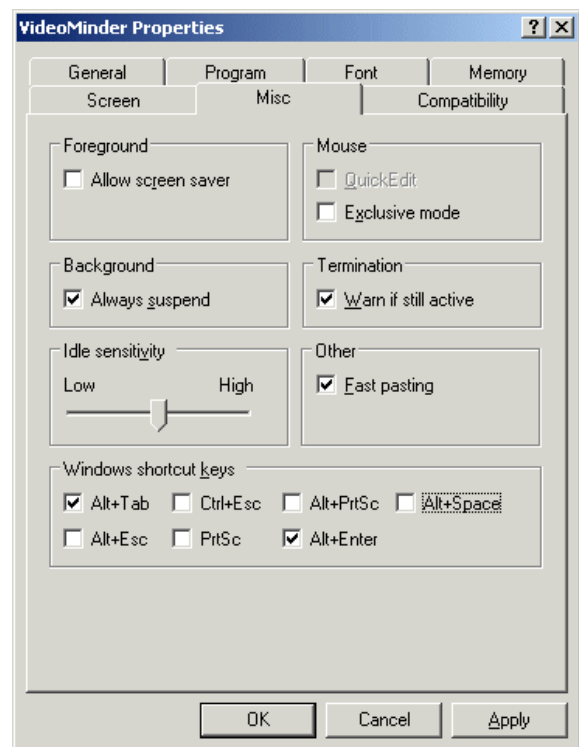
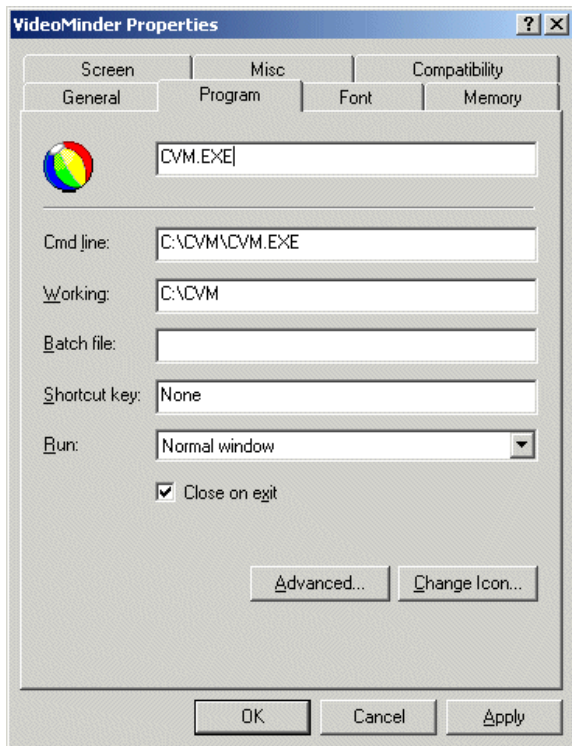
Once the server's drive has been shared, each workstation will need to map the server's shared drive. Then create a shortcut on the desktop that will point to the CVM.EXE file located in the CVM folder, on server's shared/mapped drive.

NOTE: *VIDEOMINDER data or program files are NOT to be copied on to the workstations.*

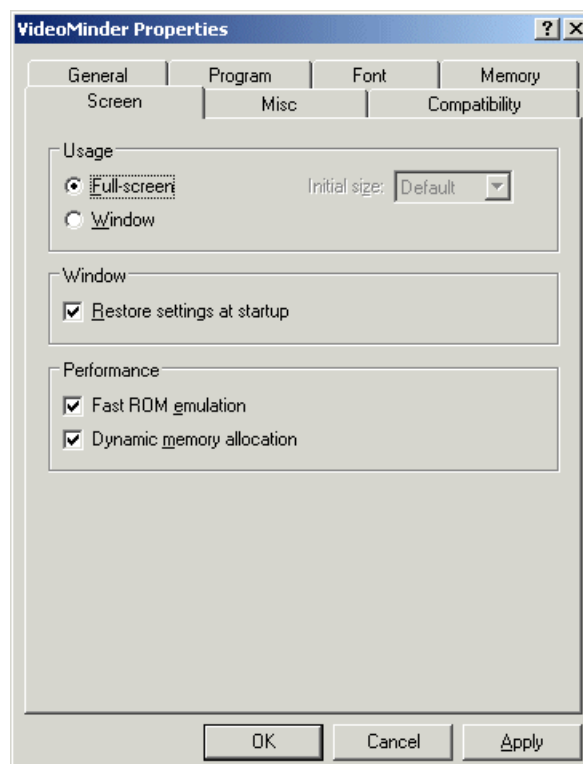
4. ADJUSTING THE VIDEOMINDER SHORTCUT PROPERTIES

After creating the shortcut for **VIDEOMINDER**, you will need to check the following properties. To do this, right click on the icon, then click Properties.

1. On the Program tab (left below) ensure that **CLOSE ON EXIT** is ticked.
2. On the Misc tab (right below) untick Ctrl+Esc, Alt+Prts, Alt+Space, Alt+Esc, Prts, and Allow Screen Saver.

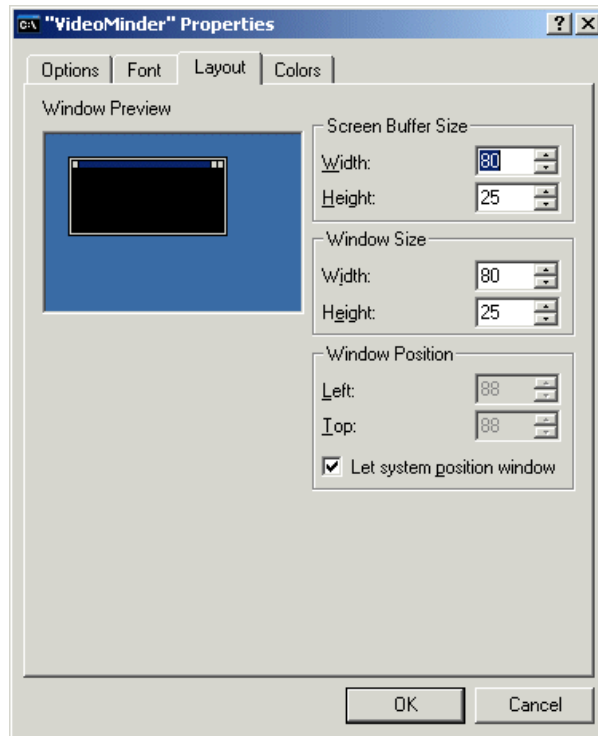


3. On the Screen tab (below) select **FULL-SCREEN**.



If, when opening up, **VIDEOMINDER** does not load into a full screen, you will need to do the following:

1. Start **VIDEOMINDER** anyway and then press ALT+ENTER to display the program in a window.
2. Right click the CVM icon in the top left hand corner, and then click Properties to get the screen below.



3. Click the Layout tab, and then lower the HEIGHT value for both your Screen Buffer Size and Window Size from 50 to 25.
4. Click OK, and choose **SAVE CHANGES FOR FUTURE USE**.

5. INSTALLING AND SHARING CASH DRAWERS

Parallel Cash Drawers

In order to install and share the cash drawer, you will need to do the following:

1. Windows requires that on the computer to which the cash drawer is connected you install a generic text printer on the parallel port that the cash drawer is connected to.
2. You then need to share that printer and give it a share name of, say, "CASH DRAWER".
3. On the workstation that will be connecting to that cash drawer you will have to capture a port on that machine. On the workstation, you will need to type the following command at a command prompt:

Net use lpt(x): \\servername\sharename /persistent:yes
(x being the required captured port number)

If you need to stop the capture for any reason, use the following command:

Net use lpt(x): /delete
(x being the required captured port number)

Serial Cash Drawers - Non Shareable

Serial Cash Drawers cannot be shared.

In order for **VIDEOMINDER** to open a serial cash drawer on a machine running Windows XP/2000, you must use the following commands in a batch file that runs **VIDEOMINDER** from the desktop icon.

mode COM(x):9600,n,8,1
mode LPT(y):=COM(x)

Where (x) = The number assigned for the com port that the cash drawer is physically plugged into.

Where (y) = The phantom LPT port for **VIDEOMINDER** - we recommend using LPT3, so that your physical LPT1 is left available for your printer or other parallel device.

Once this is done, in the **CASH DRAWERS, SLIP PRINTERS & CDU'S** screen (inside Change Setup Parameters), enter in the cash drawer's **LPT(y)** for that console/node number.

6. CASH DRAWER FIRING STRING

Within the CASH DRAWERS, SLIP PRINTERS & CDU'S screen (inside Change Setup Parameters), we advise expanding the firing string to the following:

OPEN THE CASH DRAWER PLEASE ***

This should ensure the cash drawer to fire on most faster computers.

We have also found some cash drawers that require a different firing string like:

UUUU

This can be combined with the above to allow a mix of drawers on your system. So it would look like:

OPEN THE CASH DRAWER *****UUUU

If your cash drawer will not open, please check with your supplier for the required string for your specific unit.

7. INSTALLING AND SHARING PARALLEL PRINTERS

If you are planning to buy a new printer to operate under Windows 2000/XP please ensure that:

1. it is a parallel printer and **NOT** USB.
2. it supports DOS printing.

In order to install and share the printer, you will need to do the following:

3. Windows requires, that on the computer to which the printer is connected, you install the supplied printer driver.
4. You then need to share that printer and give it a share name of, say, "PRINTER".
5. On the workstation that will be connecting to that printer you will have to capture a port on that machine. On the workstation, you will need to type the following command at a command prompt:

Net use lpt(X): \\servername\sharename /persistent:yes
(X being the required captured port number)

If you need to stop the capture for any reason, use the following command:

Net use lpt(X): /delete
(X being the required captured port number)

8. PRINTER SETTINGS IN VIDEOMINDER

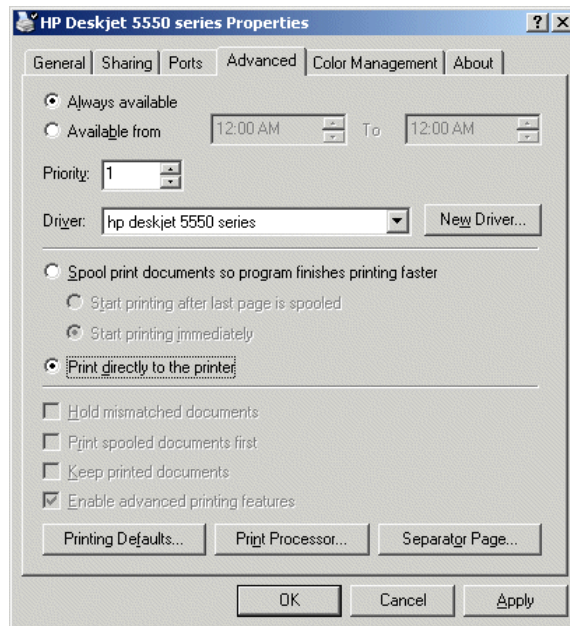
If you change your printer to a new type or brand, you may need to do the following:

1. Go to a C:\CVM prompt
2. Type in **SETUPCD CVM**
3. Choose Option **C** - Select or change printer
4. When asked to enter terminal number press **ENTER** for Default
5. Select a printer type that is closest to your printer

NOTE: We suggest you use options "R" or "M" for inkjet/laser printers, and option "H" for dot matrix printers

6. Say **Yes** to confirm selection
7. Choose **E** to Exit

If you experience problems with the printer not finishing reports, you may wish to change some of your printer settings in order to resolve the problem. To do so, access your printer properties and click on the Advanced tab (below).



Change the setting to ***PRINT DIRECTLY TO THE PRINTER.***

If, however, you continue to experience the problem, change the settings back to their original setting, and check whether the printer driver you are currently using needs to be updated.

9. HOW TO CORRECT DELAYS IN THE OPERATION OF CASH DRAWERS AND PRINTERS

In sharing printers and cash drawers across Windows 2000/XP networks, it is possible that you will experience a 60 to 90 second delay before printing begins or the cash drawer opens. To correct this problem you will need to edit the Windows registry.

BEFORE EDITING THE REGISTRY ENSURE THAT YOU PERFORM A REGISTRY BACKUP!

From the Run Box you will need to run **REGEDIT**, and edit the following Windows registry entry:

"HK_local_Machine\System\ControlSet001\Control\WOW"
and change the **"LPT_Timeout"** to **1** or **2**.